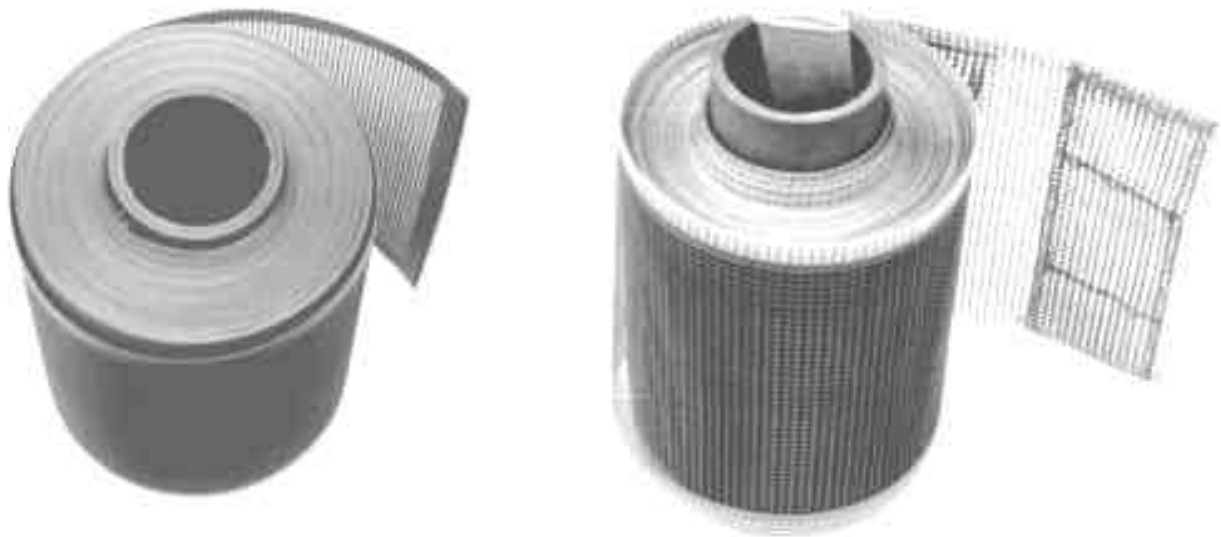


CLICK ON THE ASSYID NUMBER BELOW TO GO TO THE DRAWING

CLICK BACK ON THE DRAWING TO RETURN HERE

Assembly Drawing Titles Listing SUESSEN

ASSYID	TITLE
SU01	TRANSPORT BELTS AND ACCESSORIES
SU02	YARN CUTTER SYSTEM FOR SUESSEN HEATSETTING MACHINES
SU03	EPIC OPTICAL MASS SENSOR FOR SUESSEN HEATSETTING MACHINES
SU04	DROP WIRE ASSEMBLY -- YARN BREAK DETECTOR FOR SUESSEN AND SUPERBA HEATSETTING MACHINES
SU05	PULLEY DRIVE AND FAN COMPONENTS FOR SUESSEN HEATSETTING MACHINES



TRANSPORT BELTS AND ACCESSORIES
CORREAS Y ACCESORIOS DE TRANSPORTE

Epic Enterprises, Inc., P.O. Box 979, Southern Pines, NC 28388-0979 USA
Telephone Toll Free 800-648-7273 or 910-692-5441 Outside USA
Fax Toll Free 888-692-4147 or 910-692-4147 Outside USA
Website: <http://www.epicenterprises.com> E-Mail: epic@epicenterprises.com



Position	OEM Ref. Nos.	Epic No.	Description	UOM
SU01-01	Not Applicable	EE201860-1	Transport Belt, TCK800 , 9.25" Wide X 60'-4" Long, Alligator Splice, 1/2" Wide 5 Mil TCK Heat Sealed Edge <i>Correa de Transporte de TCK800 con Atadura de Caiman, 9.25" Ancho X 60'-4" Largo</i>	EA
SU01-02	Not Applicable	EE205839-1	Transport Belt, TCK800, 10" Wide X 39'-1-1/4" Long, Alligator Splice, with 1/2" Wide Green Skived PTFE Edge <i>Correa de Transporte de TCK800 con Atadura de Caiman, 10.0" Ancho X 39' 1-1/4" Largo</i>	EA
SU01-03	Not Applicable	EE205839-2	Transport Belt, TCK800, 10" Wide X 39' 3- 1/4" Long, Alligator Splice, with 1/2" Wide Green Skived PTFE Edge <i>Correa de Transporte de TCK800 con Atadura de Caiman, 10" Ancho X 39' 3-1/4" Largo</i>	EA
SU01-04	Not Applicable	EE201944-1	Transport Belt, TCK800, 10" Wide X 44'-4" Long, Alligator Splice, 1/2" Wide 5 Mil TCK Heat Sealed Edge <i>Correa de Transporte de TCK800 con Atadura de Caiman, 10" Ancho X 44'-4" Largo</i>	EA
SU01-05	Not Applicable	EE205871-1	Transport Belt, TCK800, Alligator Splice, 10" Wide X 71' Long, 1/2" Wide Green Skived PTFE Edge <i>Correa de Transporte de TCK800 con Atadura de Caiman, 10" Ancho X 71' Largo</i>	EA
SU01-06	Not Applicable	EE207071-1	Transport Belt, TCK800, 10.0" Wide X 71'2" Long, Loop & Pin Splice, 1/2" Wide Green Skived PTFE Edge <i>Correa de Transporte de TCK800 con Atadura de Vuetay Munon, 10.0" Ancho X 71'-2" Largo</i>	EA
SU01-06A	Not Applicable	EE207075-1	Transport Belt, TCK800, 10" Wide X 75'2" Long, Loop & Pin Splice, 1/2" Wide Green Skived PTFE Edge <i>Correa de Transporte de TCK800 con con Atadura de Vuetay Munon, 10" Ancho X 75'2" Largo</i>	EA



SU01-07	Not Applicable	EE205544-1	Transport Belt, TCK800, 9-1/4" Wide X 44'-4" Long, Alligator Splice, 1/2" Wide Green Skived PTFE Edge <i>Correa de Transporte de TCK800 con Atadura de Caiman, 9-1/4" Ancho X 44'-4" Largo</i>	EA
SU01-08	Not Applicable	EE205571-1	Transport Belt, TCK800, Alligator Splice, 9 1/4" Wide X 70'10" Long, 1/2" Green Skived PTFE Edge <i>Correa de Transporte de TCK800 con Atadura de Caiman, 9 1/4" Ancho X 70'10" Largo</i>	EA
SU01-09	Not Applicable	EE205751-1	Transport Belt, TCK800, Alligator Splice, 9-3/8" X 51'-0", 1/2" Wide Green Skived PTFE Edge <i>Correa de Transporte de TCK800 con Atadura de Caiman, 9 3/8" Ancho X 51'0" Largo</i>	EA
SU01-09A	Not Applicable	EE205771-1	Transport Belt, TCK 800, Alligator Splice, 9 3/8" Wide x 71' Long, 1/2" Wide Green Skived PTFE Edge <i>Transporte. La correa, TCK 800, costura del cocodrilo, x 9 3/8" amplio 71' desea, borde raspado verde del 1/2"</i>	EA
SU01-09B	Not Applicable	EE205779-1	Transport Belt, TCK800, 9-3/8" Wide X 79'-0" Long, Alligator Splice, with 1/2" Wide Green Skived PTFE Edge <i>Correa de Transporte de TCK800 con Atadura de Caiman, 9-3/8" Ancho X 79'-0" Largo</i>	EA
SU01-10	Not Applicable	EE205746-1	Transport Belt, TCK800, 9-1/2" Wide X 46'-7" Long, Alligator Splice, with 1/2" Wide Green Skived PTFE Edge <i>Correa de Transporte de TCK800 con Atadura de Caiman, 9 1/2" Ancho X 46'-7" Largo</i>	EA
SU01-17	Not Applicable	EE200044-1A	Transport Belt, TCK1000, 10.0" Wide X 44'-6" Long, Loop & Pin Splice, 1/2" Wide 5 Mil TCK Heat Sealed Edge <i>Correa de Transporte de TCK1000 con Atadura de Vuetay Munon, 10.0" Ancho X 44'-6" Largo</i>	EA



SU01-18	Not Applicable	EE200045-1	Transport Belt, TCK1000, 10.0" Wide X 45' Long, Loop & Pin, 1/2" Wide 5 Mil TCK Heat Sealed Edge <i>Correa De Transporte, TCK1000, El 10.0"X Amplio 45' De largo, con Atadura de Vuetay Munon, El 1/2 Ancho, 5 Borde De la Milipulgada TCK</i>	EA
SU01-19	Not Applicable	EE200062-1A	Transport Belt, TCK1000, 10.0" Wide X 62'6" Long, Loop & Pin Splice, 1/2" Wide 5 Mil TCK Heat Sealed Edge <i>Correa de Transporte de TCK1000 con Atadura de Vuetay Munon, 10.0" Ancho X 62'6" Largo</i>	EA
SU01-20	Not Applicable	EE200071-1B	Transport Belt, TCK1000, 10.0" Wide X 71'2" Long, Loop & Pin Splice, 1/2" Wide 5 Mil TCK Heat Sealed Edge <i>Correa de Transporte de TCK1000 con Atadura de Vuetay Munon, 10.0" Ancho X 71'2" Largo</i>	EA
SU01-22	Not Applicable	EE205648-1	Transport Belt, TCK1590, 9-1/4" Wide X 48'-3" Long, Alligator Splice, with 1/2" Green Skived PTFE Edge <i>Correa de Transporte de TCK1590con Atadura de Caiman, 9-1/4" Ancho X 48'-3" Largo</i>	EA
SU01-23	Not Applicable	EE205348-1	Transport Belt, TCK1590, 9 1/4" Wide X 48'3" Long, Loop & Pin Splice, 1/2" Wide 5 Mil TCK Heat Sealed Edge <i>Correa de Transporte de TCK1590 con Atadura de Vuetay Munon, 9 1/4" Ancho X 48'3" Largo</i>	EA
SU01-24	Not Applicable	EE205370-1	Transport Belt, TCK1590, 9 1/4" Wide X 70'10" Long, Loop & Pin Splice, 1/2" Wide 5 Mil TCK Heat Sealed Edge <i>Correa de Transporte de TCK1590 con Atadura de Vuetay Munon, 9 1/4" Ancho X 70'10" Largo</i>	EA
SU01-25	Not Applicable	EE205371-1	Transport Belt, TCK1590, 9 1/4" Wide X 71' Long, Loop & Pin Splice, 1/2" Wide Green Skived PTFE Edge <i>Correa de Transporte de TCK1590 con Atadura de Vuetay Munon, 9 1/4" Ancho X 71' Largo</i>	EA



SU01-26	Not Applicable	EE205679-1	Transport Belt, TCK1590, 9 1/4" Wide X 79' Long, Alligator Splice, 1/2" Wide Green Skived PTFE Edge <i>Correa de Transporte de TCK1590 con Atadura de Caiman, 9-1/4" Ancho X 79' Largo</i>	EA
SU01-26A	Not Applicable	EE205683-1	Transport Belt, TCK1590, 9 1/4" Wide X 83' Long, Alligator Splice, 1/2" Wide Green Skived PTFE Edge <i>Correa de Transporte de TCK1590 con Atadura de Caiman, 9-1/4" Ancho X 83' Largo</i>	EA
SU01-27	Not Applicable	EE205671-1	Transport Belt, TCK1590, Alligator Splice, 9-1/4" X 71'0", 1/2" Wide Green Skived PTFE Edge <i>Correa de Transporte de TCK1590 con Atadura de Caiman, 9-1/4" Ancho X 71'0" Largo</i>	EA
SU01-28	Not Applicable	EE201151-1	Transport Belt, TCK1590, 9.375" Wide X 51'-0" Long, Alligator Splice, 1/2" Wide 5 Mil TCK Heat Sealed Edge <i>Correa de Transporte de TCK1590 con Atadura de Caiman, 9.375" Ancho X 51'0" Largo</i>	EA
SU01-29	Not Applicable	EE201170-1	Transport Belt, TCK1590, 9.375" Wide X 70'-10" Long, Alligator Splice, 1/2" Wide 5 Mil TCK Heat Sealed Edge <i>Correa de Transporte de TCK1590 con Atadura de Caiman, 9.375" Ancho X 70'-10" Largo</i>	EA
SU01-30	Not Applicable	EE205946-1	Transport Belt, TCK1590, Alligator Splice, 9-3/4" Wide X 46' 7" Long, 1/2" Wide 5 Mil TCK Heat Sealed Edge <i>Correa de Transporte de TCK1590 con Atadura de Caiman, 9-3/4" Ancho X 46'7" Largo</i>	EA
SU01-31	Not Applicable	EE205463-1	Transport Belt, TCK1590, 10" Wide X 63'8" Long, Loop & Pin Splice, 1/2" Wide Green Skived PTFE Edge <i>Correa de Transporte de TCK1590 con Atadura de Vuetay Munon, 10" Ancho X 63'8" Largo</i>	EA



SU01-32	Not Applicable	EE201239-2	Transport Belt, TCK1590, 10.0" Wide X 39'-1 1/4" Long, Alligator Splice, 1/2" Wide Green Skived PTFE Edge <i>Correa De Transporte, TCK1590, EI 10.0"X Amplio 39'-1 EI 1/4" De largo, Empalme Del Cocodrilo, Doble Triple Ancho Bullnose Del 1/2"</i>	EA
SU01-33	Not Applicable	EE201339-1	Transport Belt, TCK1590, 10.0" Wide X 39'-1 1/4" Long, Loop & Pin Splice, 1/2" Wide Green Skived PTFE Edge <i>Correa De Transporte, TCK1590, EI 10.0"X Amplio 39'-1 EI 1/4" Empalme De largo, con Atadura de Vuetay Munon, Borde Verde Ancho Del 1/2"</i>	EA
SU01-34	Not Applicable	EE201239-3	Transport Belt, TCK1590, 10.0" Wide X 39'-3 1/4" Long, Alligator Splice, 1/2" Wide Green Skived PTFE Edge <i>Correa De Transporte, TCK1590, EI 10.0"X Amplio 39'-1, 3 1/4" De largo, Empalme Del Cocodrilo, Doble Triple Ancho Bullnose Del 1/2"</i>	EA
SU01-35	Not Applicable	EE201262-1	Transport Belt, TCK1590, 10.0" Wide X 62'-6" Long, Alligator Splice, 1/2" Wide 5 Mil TCK Heat Sealed Edge <i>Correa de Transporte de TCK1590 con Atadura de Caiman, 10.0" Ancho X 62'-6 Largo</i>	EA
SU01-36	Not Applicable	EE206062-1	Transport Belt, TCK 1590, Loop & Pin Splice, 10" X 62' 6", 1/2 Wide Green Skived PTFE Edge <i>Correa de Transporte de TCK1590 con Atadura de Caiman, 10" Ancho X 62'6"</i>	EA

Suessen is a trademark of Horauf-Suessen AG

Epic products are intended as replacements for worn or damaged parts in OEM products. OEM Part numbers in (parenthesis) indicate either 1) Improved design 2) the part serves the same function as the OEM part, but may differ from the OEM design, or 3) it is a component of an assembly where no OEM reference number is available, or 4) it is a repair service for the referenced OEM part.

EE is an Epic trademark designating Epic parts

Suessen is a trademark Spindelfabrik
Suessen, Schlurr, Stahlecker & Grill GmbH

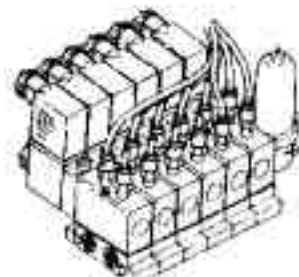
© Epic Enterprises, March 2008



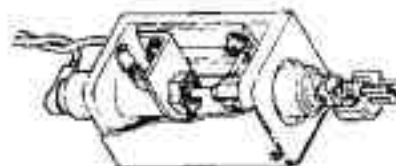
Pneumatic Yarn Cutter Assembly
is mounted on Cabinet Side



*Conjunto Neumatico de Cortante de Hilo -
Conjunto de Valvula es en Gabinete*



EE203160 Valve Body Assembly
Conjunto de Cuerpode Valvula



Cut-Away View of EE203200
Heavy Duty Cutter
*Inspeccion de Cortador,
Servicio Pesado*

YARN CUTTER SYSTEM FOR SUESSEN HEATSETTING MACHINES
SISTEMA DE CORTANTE DE HILO PARA TERMAFIJADORES DE SUESSEN

Epic Enterprises, Inc., P.O. Box 979, Southern Pines, NC 28388-0979 USA
Telephone Toll Free 800-648-7273 or 910-692-5441 Outside USA
Fax Toll Free 888-692-4147 or 910-692-4147 Outside USA
Website: <http://www.epicenterprises.com> E-Mail: epic@epicenterprises.com



Position	OEM Ref. Nos.	Epic No.	Description	UOM
SU02-01	Not Applicable	EE203000	Yarn Cutter Assembly (A-18265) <i>Conjunto de Cortador de Hilo</i>	EA
SU02-02	Not Applicable	EE203120	Protective Box for Valve Assembly <i>Caja de Proteccion Para Valvula</i>	EA
SU02-03	Not Applicable	EE203160	Valve Body Assembly, 6 Station <i>Conjunto de 6 Valvulas</i>	EA
SU02-04	Not Applicable	EE203161	Solenoid Coil for EE203160 <i>Arrollamiento de Solenoide para EE203160</i>	EA
SU02-05	Not Applicable	EE203162	Solenoid Coil and Valve Assembly <i>Conjunto de Arrollamiento y Valvula</i>	EA
SU02-06	Not Applicable	EE203200	Heavy Duty Cutter Complete (SPD1304) (10,000 Denier Yarn or Less) <i>Cortador Completo para Servicio Endurocido</i>	EA
SU02-07	Not Applicable	EE203240	Pigtail for Cutter Channel Rail <i>Colade Puerco para Reil</i>	EA
SU02-08	Not Applicable	EE203280	Spacer for Cutter A-18315 <i>Espacador para Cortador</i>	EA
SU02-09	Not Applicable	EE203320	Yarn Cutter Clamp Assembly Model 60 <i>Conjunto Nuevo de Abrazadera para Cortador #60</i>	EA
SU02-10	Not Applicable	EE203324	Replacement Head L/H for Cutter <i>Cabeza de Reemplazo</i>	EA
SU02-11	Not Applicable	EE203360	Cutter Channel Rail Kit A-18329 <i>Equipos de Reil de Cortador</i>	EA
SU02-12	Not Applicable	EE203400	Cutter Air Filter Unit <i>Filtro Aire para Cortador</i>	EA
SU02-13	CD1382	EE203440	Cutter Ceramic Guide, 5mm ID X 8mm OD Nominal (for New Cutter) <i>Guiahilo Ceramico para Cortador Nuevo, 5mmX8mm</i>	EA
SU02-14	Not Applicable	EE203442	Cutter Ceramic Guide, 3.5mm ID X 6.5mm OD Nominal (for Old Type Cutter) <i>Guiahilo Ceramico para Cortador Nuevo, 3.5X6.5mm</i>	EA



SU02-15	Not Applicable	EE203454	Stainless Steel Rivet for Cutter EE203200 <i>Remarche de Acero Inoxidable para Cortador EE203200</i>	EA
SU02-16	4MM	EE203480	Pneumatic Tubing, 100 foot roll (30 meters) <i>Tubo Pneumatico, Rodillo de 30 meters</i>	EA
SU02-17	Not Applicable	EE203201	Repair Kit for Cutter System EE203200 <i>Kit de reparación para el sistema el cortador EE203200</i>	EA
SU02-18	Not Applicable	EE203456	Screw, Machine, for Cutter, SPD-1604- 23 <i>Tornillo Cilindrico par Cortador, SPD- 1604-23</i>	EA

Heavy Duty Cutter Easily Cuts Out Four or more ends with a total denier weight of up to 10,000
 Reliable & Simple. Many years of Proven Operatio
 Fast, Positive Cuts from Pneumatic Cylinder
 Reduces Cut-Out Scra
 Fully Automatic - Labor Savin
 Almost Totally Maintenance Fre
 Helps Eliminate Seconds or Dye Streaks from Uneven Heatsettin

GENERAL: The Epic EE203000 Pneumatic Yarn Cutter Assembly has been in service in carpet yarn plants for many years and is generally regarded by plant personnel as the most reliable, positive cutter system available. The system is activated by either A) An optical scanner to sense yarn mass build-up at exit on non-stufferbox models, and/or B) a detector to sense an end break within the yarn bundle prior to entry into the GWM winder. Cutter Channel Rail Kit EE203360 includes a mounting channel, two end pieces and six mounting angle brackets. For older systems designed with the older Model 50 cutter, spacer EE203280 is used to elevate the mounting of the new heavy duty cutter off the old mounting channel so that the new cutter is in the correct position. The system is low maintenance. The need for replacement parts is minimal.

OPERATION: EE203000 Pneumatic Yarn Cutter Assembly normally operates on plant compressed air (40-90 psi or 3-6 BAR), but can run at pressures up to 150 psi (10 BAR). Air is connected to the inlet port of the air filter on the valve assembly. If the total denier to be cut approaches 10,000, keep air pressure at 60-90 psi (4-6 BAR) at the device for a fast, clean cut. When either the Optical Mass Sensor (see catalog page 03) senses a yarn build-up on the exit masts) or the Drop Wire Device (see catalog page 05) detects a break prior to the GWM, an electric signal is sent to the appropriate valve in the valve assembly. This pneumatically actuates the cutter. The yarn bundle is then precision cut, without frayed ends. The yarn cutter clamp holds the creel supplied yarn until the problem has been corrected. The cutter clamp then reopens to allow rethreading. The Mass Optical Sensor and Drop Wire Device operate on 24V power supplied from the Suessen power source or a separate transformer.

VALVE BODY ASSEMBLY EE203160 consists of six electropneumatic valves on a subplate with a metal bowl air filter, Hirschman electrical connectors, and brass tube connectors with o-rings. The valve body is equipped with a test switch for test firing to assure proper operation of the valves and cutters. The Protective Box Only for the Valve Body Assembly is Part EE203120.

HEAVY DUTY CUTTER EE203200 consists of a double acting, positive-action pneumatic solenoid cylinder. The cutter shaft and guide bushings are hardened 440C stainless steel. Cutting is performed by a ceramic cutter guide.



INSTALLATION: Epic's semi-rigid, nylon tubing should be used. Lower cost PVC or PE tubing is not recommended. In cutting tubing, make sure a clean straight cut is made to assure proper seating in the connector. Cutters should be mounted so that the clamp side of the cutter faces the creels. Cutter heads should be periodically lubricated with a TFE aerosol. Do not use WD-40 type lubricants because they can react with yarn finishes.

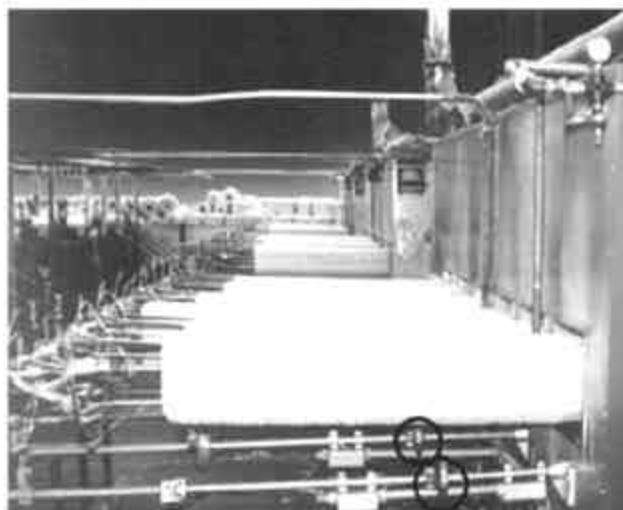
Epic products are intended as replacements for worn or damaged parts in OEM products. OEM Part numbers in (parenthesis) indicate either 1) Improved design 2) the part serves the same function as the OEM part, but may differ from the OEM design, or 3) it is a component of an assembly where no OEM reference number is available, or 4) it is a repair service for the referenced OEM part.

EE is an Epic trademark designating Epic parts

Suessen is a trademark Spindelfabrik
Suessen, Schlurr, Stahlecker & Grill GmbH

© Epic Enterprises, March 2008





Optical Mass Sensor is seen at lower right and under yarn in Photograph (Circled)

Sensor de Masa Optica es por derecho bajo y debajo de hilo en photographia

EE204000

Optical Mass Sensor with Mounting Hardware
Sensor de Masa Optica con Ferreteria Monta



EE204040

Mounting Bracket for Securing to Support Tube
Soporte para Montage de Sensor



EPIC OPTICAL MASS SENSOR FOR SUESSEN HEATSETTING MACHINES
SENSOR DE MASA OPTICA PARA TERMOFIJADORES DE SUESSEN

Epic Enterprises, Inc., P.O. Box 979, Southern Pines, NC 28388-0979 USA
Telephone Toll Free 800-648-7273 or 910-692-5441 Outside USA
Fax Toll Free 888-692-4147 or 910-692-4147 Outside USA
Website: <http://www.epicenterprises.com> E-Mail: epic@epicenterprises.com



<i>Position</i>	<i>OEM Ref. Nos.</i>	<i>Epic No.</i>	<i>Description</i>	<i>UOM</i>
SU03-01	MPD70PT	EE204000	Optical Mass Sensor <i>Sensor de Masa Optica</i>	EA
SU03-02	Not Applicable	EE204040	Optical Sensor Mounting Bracket <i>Soporte para Montaje de Sensor</i>	EA

Automatically Activates Cutter Before Entry. Operates When Yarn Mass Accumulates Backward on Masts Towards Heatset Chamber

PROBLEM: If the winder take-up stops for any reason, yarn passing through the Suessen heatset chamber will back up on the accumulator masts and eventually back up into the heatset chamber. When this occurs, as it does frequently, the yarn will be exposed to excessive heat, causing dye problems.

SOLUTION: The Optical Mass Sensor EE204000, positioned on the 705 Support Tube under the accumulator masts, senses an impending build-up of yarn. When the yarn build-up becomes so great that there is a danger that yarn may back up into the heatset chamber, the Sensor transmits a signal to the cutter system (see Catalog page 02 for Epic Cutter System), located in front of the GWM. The yarn is then cut so that no more yarn can enter the chamber until the problem is solved. The actual positioning of the sensor on the 705 Support Tube varies and depends on speed, lay, total denier/count and number of ends. Some experimentation with sensor positioning will be required.

OPERATION: The Optical Mass Sensor operates on 24V, 3A power normally supplied from the control cabinet or from a separate transformer. Light emitted from the Sensor and focused on yarn on the accumulator masts reflects back to the sensor. If the sensor detects a dense packing of yarn on the masts that might back up into the heatset chamber, it signals the cutter system to cut the yarn prior to entry into the GWM unit.

The sensor has a time delay that can be set between 1-10 seconds. It is most typically set at 4-6 seconds. The time delay permits the sensor to overlook minor yarn bunching on the accumulator masts and to activate the cutter only when there is serious bunching leading to a back-up into the heatset chamber. The sensor has an LED which lights when it is sensing any major build-up on the accumulator. The red light also serves to let operators know that the sensor is fully operative.

MAINTENANCE: The sensor itself is maintenance free. However, and because the sensor depends on light transmission, the plastic lens protectors and lenses should be regularly cleaned.

PRECAUTION: The sensor is not waterproof. Care should be taken not to direct water or steam onto the sensor during external cleaning of the machine.

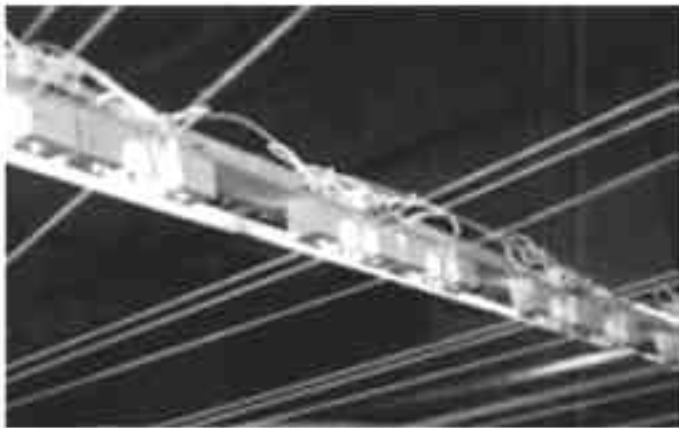
Epic products are intended as replacements for worn or damaged parts in OEM products. OEM Part numbers in (parenthesis) indicate either 1) Improved design 2) the part serves the same function as the OEM part, but may differ from the OEM design, or 3) it is a component of an assembly where no OEM reference number is available, or 4) it is a repair service for the referenced OEM part.

EE is an Epic trademark designating Epic parts

Suessen is a trademark Spindelfabrik
Suessen, Schlurr, Stahlecker & Grill GmbH

© Epic Enterprises, March 2008

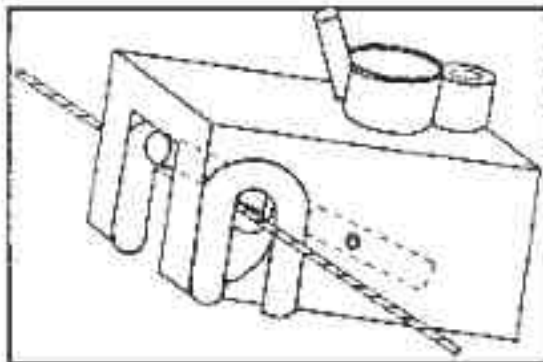




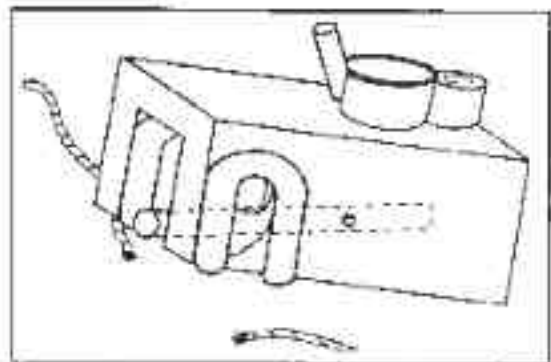
Drop Wire Assembly
Conjunto de Laminilla



Mounting of Epic Drop-Wire
Monta de Laminilla de Epic



Normal Operation
Operacion Norma



Activation on End Break
Activacion a Rotura de Hilo

**DROP WIRE ASSEMBLY -- YARN BREAK DETECTOR
FOR SUESSEN AND SUPERBA HEATSETTING MACHINES
*CONJUNTO DE LAMINILLA - DETECTOR DE ROTURA***

Epic Enterprises, Inc., P.O. Box 979, Southern Pines, NC 28388-0979 USA
Telephone Toll Free 800-648-7273 or 910-692-5441 Outside USA
Fax Toll Free 888-692-4147 or 910-692-4147 Outside USA
Website: <http://www.epicenterprises.com> E-Mail: epic@epicenterprises.com



Position	OEM Ref. Nos.	Epic No.	Description	UOM
SU04-01	Not Applicable	EE280001	Nylon Insulator for Drop Wire Assembly (A-18441) <i>Aislador para Conjunto de Caballero</i>	EA
SU04-02	IM-192	EE204085	Eyelet for Drop Wire Assembly <i>Guia Ceramica para Caballero</i>	EA
SU04-03	Not Applicable	EE204080	Drop Wire Assembly A-18330 <i>Conjunto de Caballero</i>	EA

Simple, Reliable Design
Automatically Activates Yarn Cutter
Labor Saving
Compact & Inexpensive
Less Sensitive to Fly (Lint) Accumulation

The EE204080 Drop Wire Assembly is a highly reliable device that detects the break of a single end of yarn within a yarn bundle and automatically transmits a low voltage signal to the yarn cutter system to cut out the faulty bundle prior to entry into the heatset chamber. The function of the drop wire assembly is to prevent the remaining yarn ends from entering the heat chamber, and therefore, prevent uneven dye acceptance. The broken end is easily repaired outside the chamber and the heatset machine restarted with only moments of downtime and minimal lost yarn. The device minimizes the need for close operator supervision...freeing the individual to tend to other work.

EE204080 Drop Wire Assembly may be used in conjunction with other cutter systems. It is an integral part of the complete EE203000 Yarn Cutter System for the Suessen (catalog page 02) and the EE204000 Optical Mass Sensor (catalog page 03) for sensing yarn build-ups on the exit masts.

MOUNTING: The Epic device is readily adapted to most feed creel designs. It is compact measuring overall 1" X 1" X 2" (25 X 25 X 50mm) allowing, for example, four ends to be monitored in less than 9" (225mm). The device is normally mounted on angle iron between the creel and entry into the heatset machine. Mounting drill holes in the angle iron should be 21/64 or 8.5mm. See Photograph.

OPERATION: The device operates on the same 12-24 volt system (from control cabinet or separate transformer) as the Epic Cutter System and Epic Mass Optical Sensor with the power supplied either from the heatset machine transformer or from a separate transformer. A wire is led to the connection on the device. A second ground wire is led to the angle iron supporting all drop wire devices.

The yarn bundle from the feed creel is divided into its separate ends prior to the drop wire device. Each end is then run through the ceramic eye of the device. After passing through the ceramic eye, the yarn bundle ends are allowed to come back together again, usually passing through a pigtail (e.g., Part EE203240 Pigtail on the Cutter Channel Rail, EE203360).

The cantilevered trigger of the device lies gently on the top of the yarn during normal operation. When an end break occurs, the trigger bar drops making electric contact and sends a signal to the individual cutter (e.g., Part EE203000) to cut the specific yarn bundle with a broken end. Operation is shown in drawings below.

The Epic Drop Wire Device is less sensitive to fly accumulation because the trip mechanism is enclosed. However, the device should be periodically cleaned to remove minor fiber accumulations.



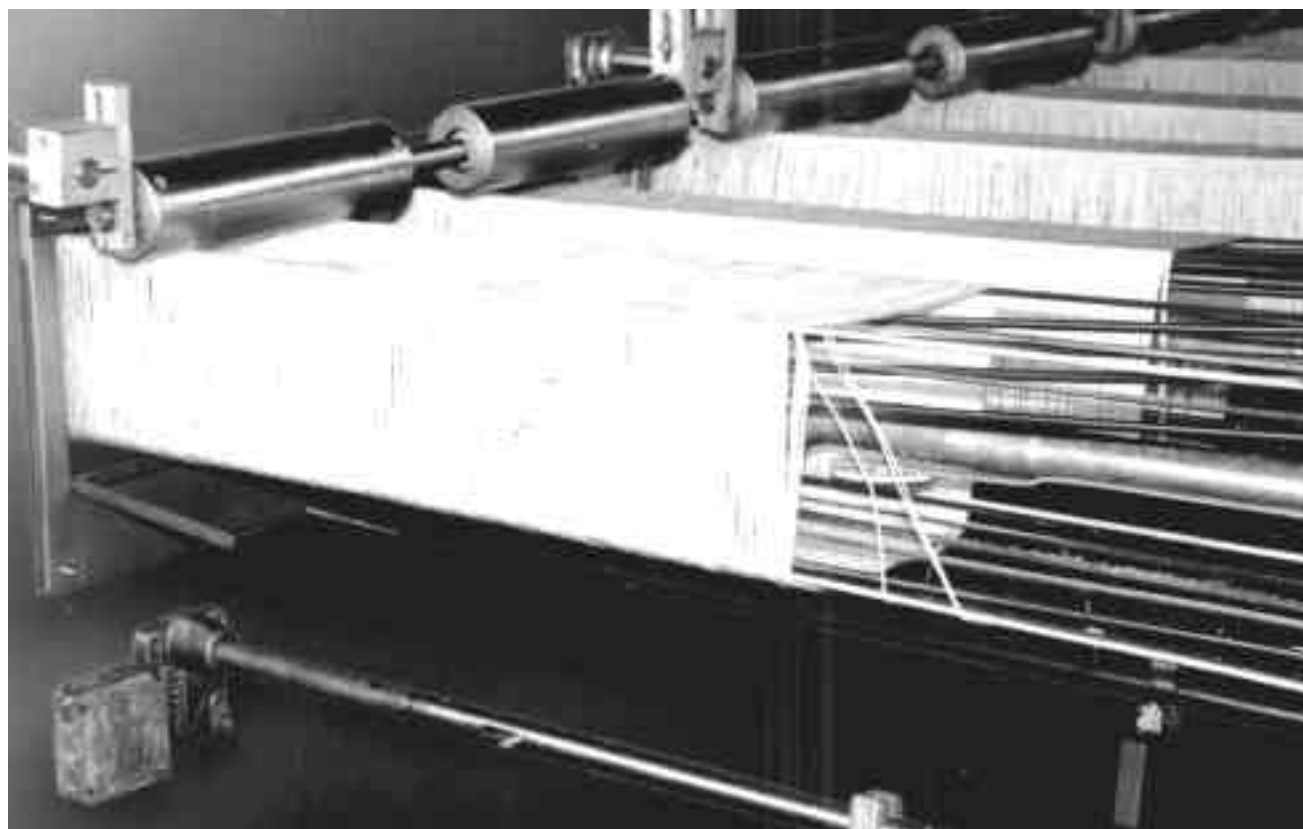
Epic products are intended as replacements for worn or damaged parts in OEM products. OEM Part numbers in (parenthesis) indicate either 1) Improved design 2) the part serves the same function as the OEM part, but may differ from the OEM design, or 3) it is a component of an assembly where no OEM reference number is available, or 4) it is a repair service for the referenced OEM part.

EE is an Epic trademark designating Epic parts

Suessen is a trademark Spindelfabrik
Suessen, Schlurr, Stahlecker & Grill GmbH

© Epic Enterprises, March 2008





PULLEY DRIVE AND FAN COMPONENTS FOR SUESSEN HEATSETTING MACHINES
MANDO DE POLEA Y COMPONENTES DE VENTILADOR

Epic Enterprises, Inc., P.O. Box 979, Southern Pines, NC 28388-0979 USA
Telephone Toll Free 800-648-7273 or 910-692-5441 Outside USA
Fax Toll Free 888-692-4147 or 910-692-4147 Outside USA
Website: <http://www.epicenterprises.com> E-Mail: epic@epicenterprises.com



Position	OEM Ref. Nos.	Epic No.	Description	UOM
SU05-01	117 GE70.6117	EE202000	Bearing, Gear Pulley Shaft <i>Rodamiento para Eje de Polea</i>	EA
SU05-02	480 GE70.0480	EE202040	Shaft, Long Gear Drive <i>Eje Largo para Engranaje</i>	EA
SU05-03	520 E70.0520 GE70.0520	EE202120	Pulley, Short Rope <i>Polea Corta para Cuerda</i>	EA
SU05-04	521 E70.0521 GE70.0521	EE202160	Pulley, Long Rope <i>Polea Larga para Cuerda</i>	EA
SU05-05	522 E70.0522 GE70.0522	EE202162	Cover, Viton Rope Pulley <i>Cubierta de Viton para Polea de Cuerda</i>	EA
SU05-06	1704 GE70.1704	EE202280	O-Ring, Exhaust Fan Viton <i>Anillo "O" para Ventilador de Salida</i>	EA

Suessen is a trademark of Horauf-Suessen AG

Epic products are intended as replacements for worn or damaged parts in OEM products. OEM Part numbers in (parenthesis) indicate either 1) Improved design 2) the part serves the same function as the OEM part, but may differ from the OEM design, or 3) it is a component of an assembly where no OEM reference number is available, or 4) it is a repair service for the referenced OEM part.

EE is an Epic trademark designating Epic parts

Suessen is a trademark Spindelfabrik
Suessen, Schlurr, Stahlecker & Grill GmbH

© Epic Enterprises, March 2008

